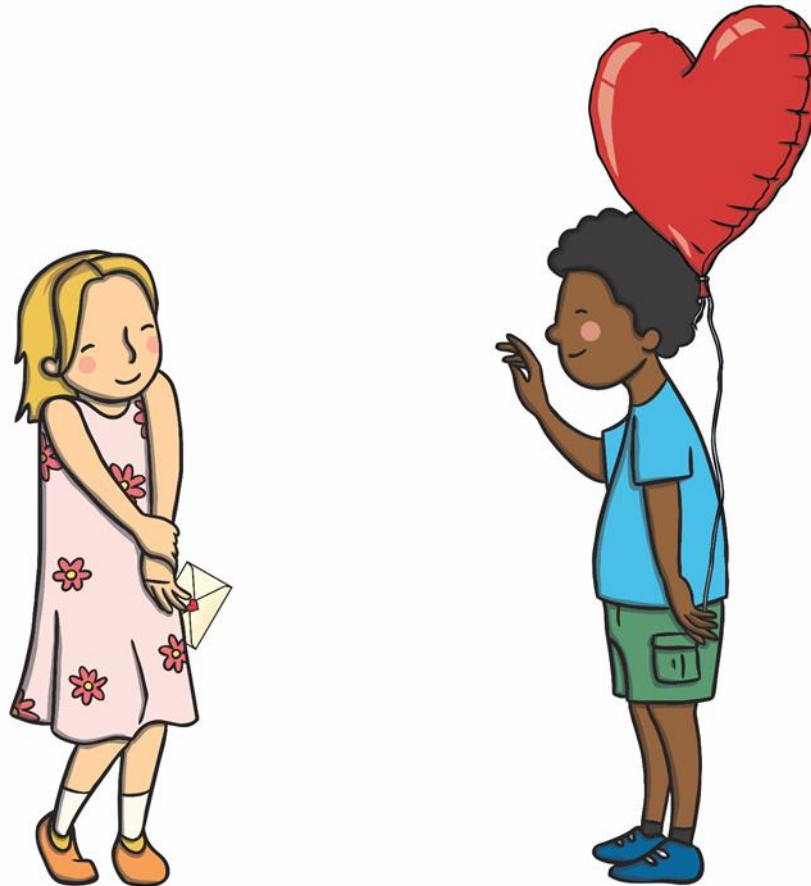


# All about Valentine's Day

twinkl



Valentine's Day is celebrated on the 14<sup>th</sup> of February. It is a special day when people show their love to another person. People often give presents and cards on this day.



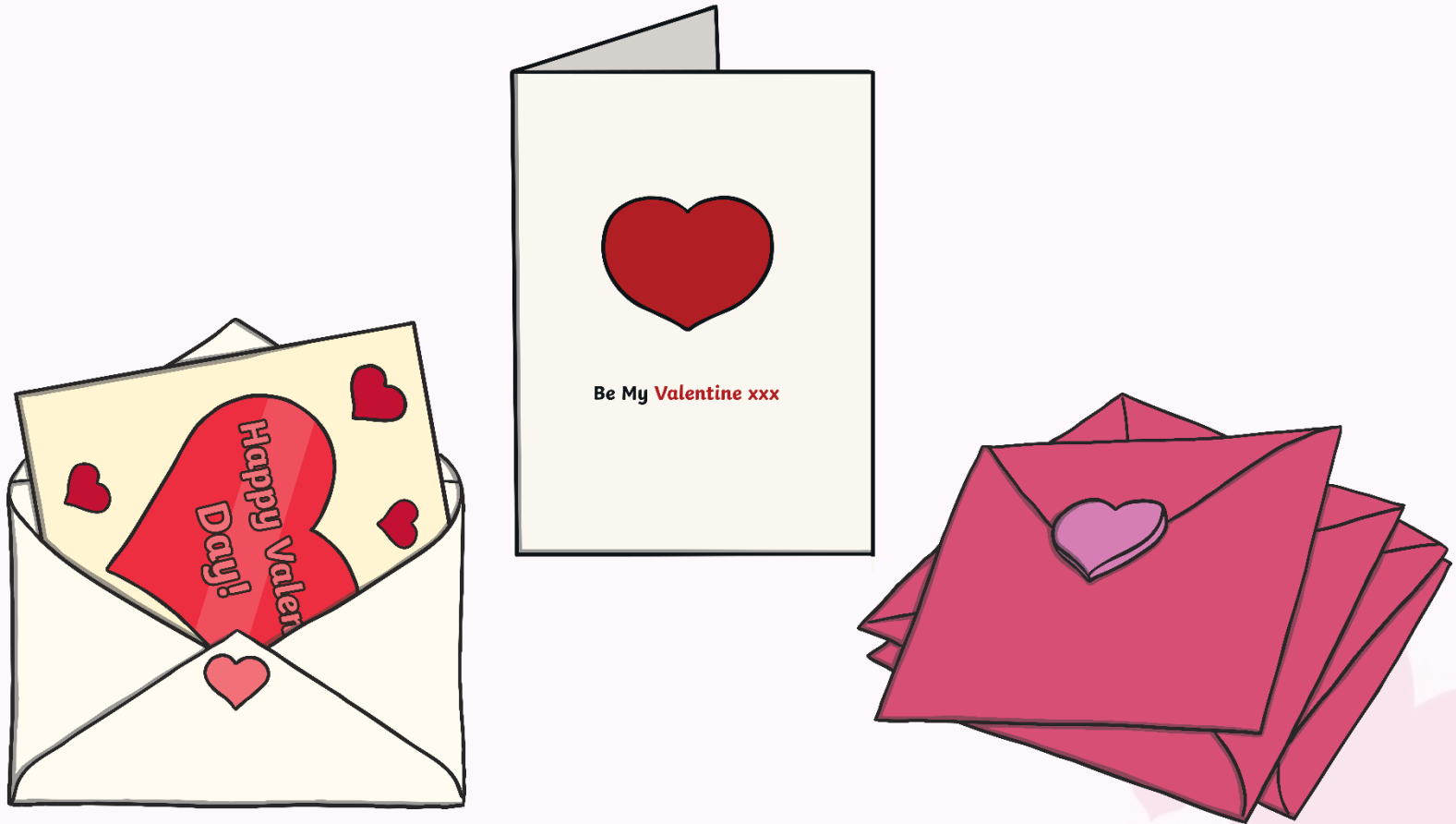
People may give each other chocolates on Valentine's Day.



People may give each other flowers on Valentine's Day. Red roses are a popular choice.

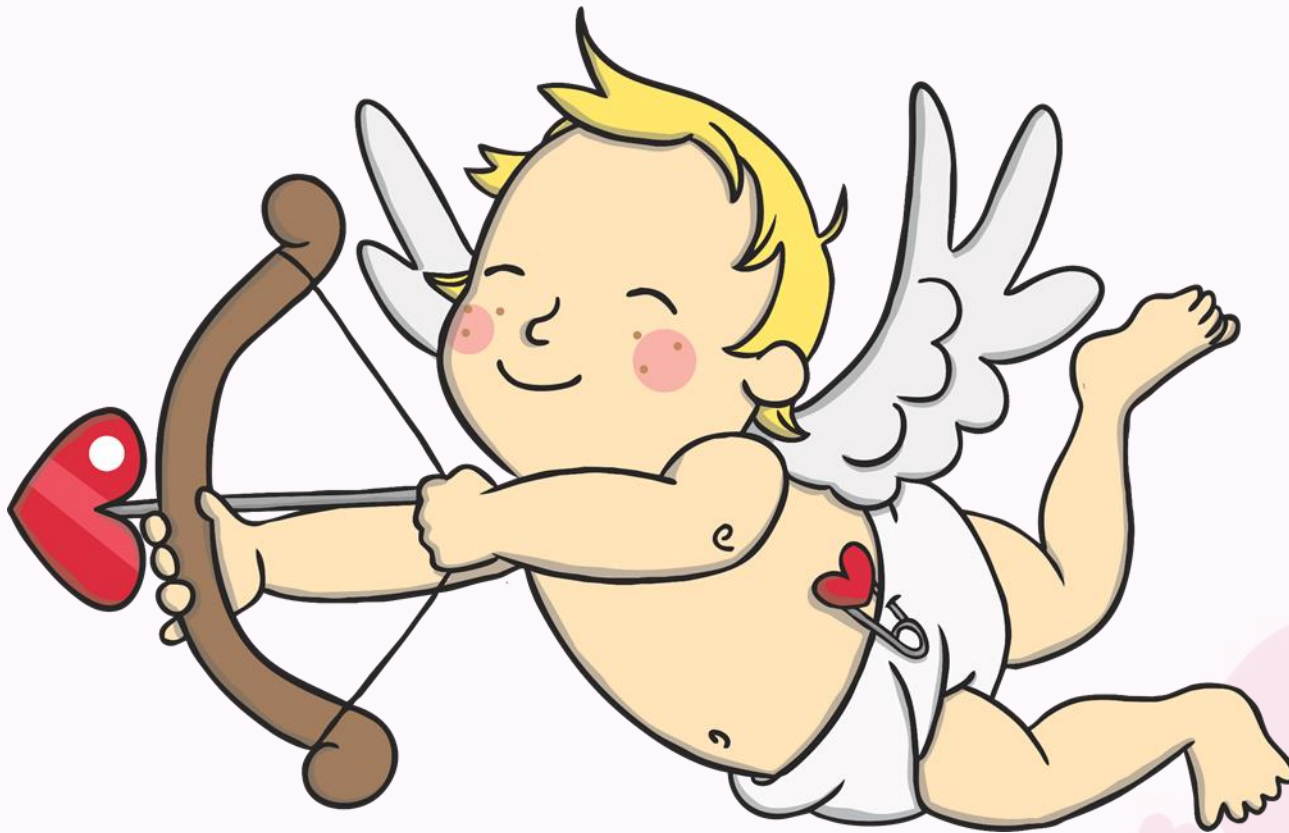


People may send Valentine's Day cards to each other, with a special message inside.

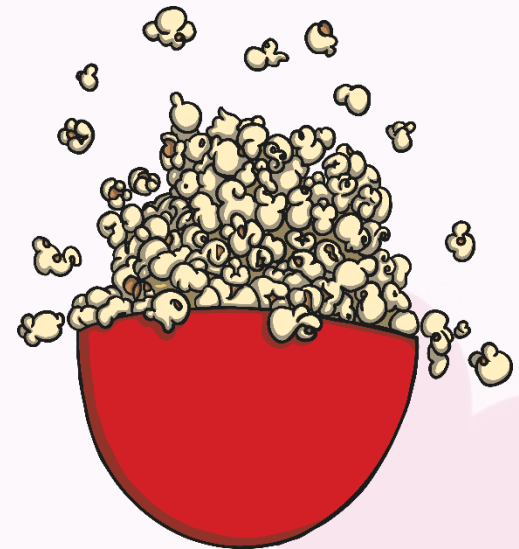




Cupid is often seen on Valentine's Day cards. He is a baby angel, with a bow and arrow. He helps people to fall in love.



People may also do special things on Valentine's Day like going out to the cinema or having a special meal.



These are some symbols of Valentine's Day:





